

# Holiday

## GIFT BOX ASSEMBLY INSTRUCTIONS

### SMALL BOX

- 1** Fold in the short sides, and clasp the locks together.



- 2** Fold in the flaps with the logo on top.



- 3** Interlock the bow using the notches.

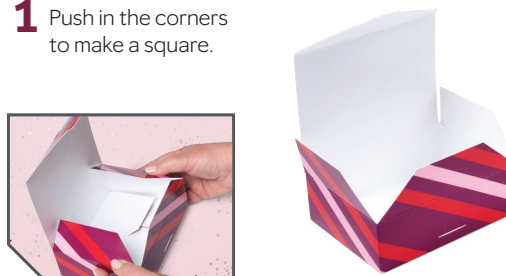


- 4** Lift up the bow panels to add dimension.

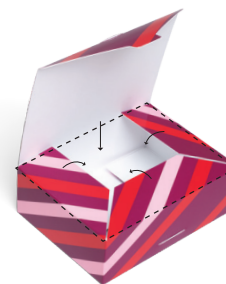


### MEDIUM BOX

- 1** Push in the corners to make a square.



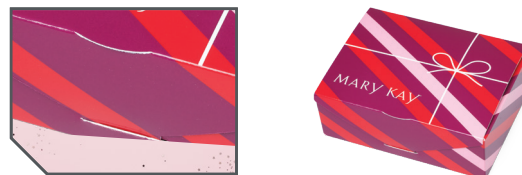
- 2** Fold in the side panels and front panels.



- 3** Fold down the lid.



- 4** Push the tab into the slot, securing the lid.

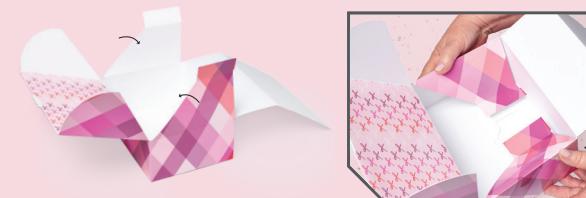


### LARGE BOX

- 1** Push in the corners to create a square.



- 2** Fold the side flaps into the base of the box.



- 3** Fold the long front panel into the base.



- 4** Fold in the side-lid panels, then tuck them into the base.

